



# *Elektron*

*Computer Controlled Robotic Plotter-Cutter*



## **THE COMPLETE BLIND-MAKING MACHINE**

**Elektron B2. Cut scallops, square, crease and mark ~ All on the one table.**

The Elektron B2 Blind-Maker is a complete automated system for making roller and roman blinds, screens and canvas awning skins. For many years this system has been the top selling blind making machine in Australia. Several patterns can be marked, creased, scalloped and squared in the one operation without moving the fabric on the cutting table.

Using very simple software, the operator on the factory floor can produce patterns from an order form ready for nesting and cutting. Or complete queues of patterns can be automatically generated from your factory sales system. The ability to nest entire queues of patterns on the one table means you get the best use of fabric you buy and you control the waste on every blind you make.

The Elektron B2 is a highly developed automated system used by almost all major blind manufacturers. Because it is an automated system, a single operator can achieve very significant productivity gains and waste reduction compared with manually operated cutting tables. Finish and quality can be maintained even in busy high season times.

The Elektron B2 Blind-Maker is available in a range of sizes with options including ultrasonic, blade and crush cutting, creasing, laser pointers for pattern matching and fabric feeders with integrated light boxes for fabric fault checking.

- Any roller style
- Any roman style
- Any canvas Style
- Cut, crease, & scallop
- Simple software
- Nesting reduces waste
- Automated cutting
- Reduces mistakes
- Well proven design
- Customisable patterns
- Rolling blade cutting
- Ultrasonic cutting
- Crush cutting
- Roller creasing
- Pen markers
- Optional drill~punch
- 10 second tool changes
- Australian made
- Low maintenance
- Easy servicing
- Affordable purchase price

# Blinds & Awnings



Aeronaut has the answers to let you design roller and roman blinds, screens and awnings quickly and efficiently. Two easy to use programs, let you create patterns for canvas awnings, holland or roman blinds in seconds... ready for plotting and cutting. New trims and fabric can be added to both programs by the user with simple drag and drop.

**Aeroblinds 8** is a stand alone program intended for use on the shop floor or in the front office where size and pattern information can be entered directly from an order. Aeroblinds does not require any special skills to use, and can be learned in a few hours.

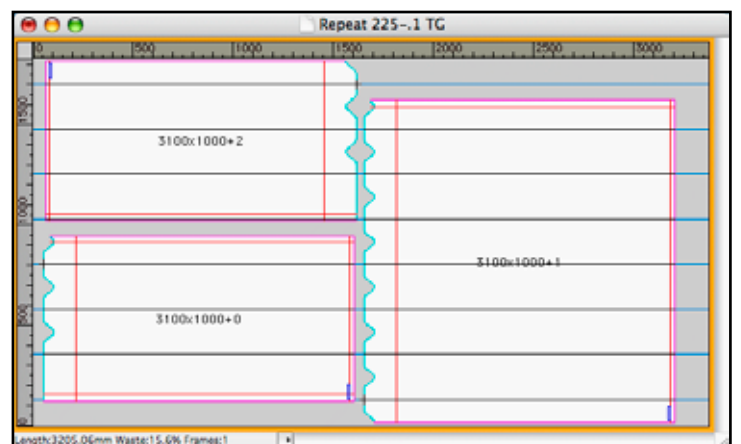
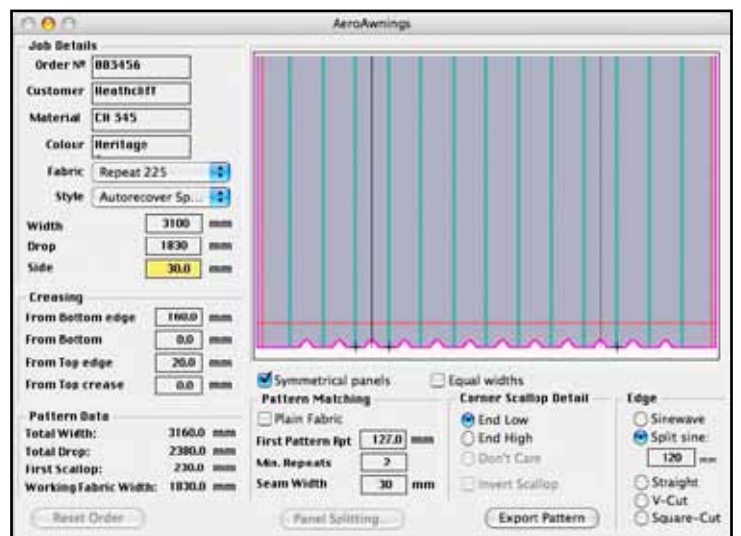
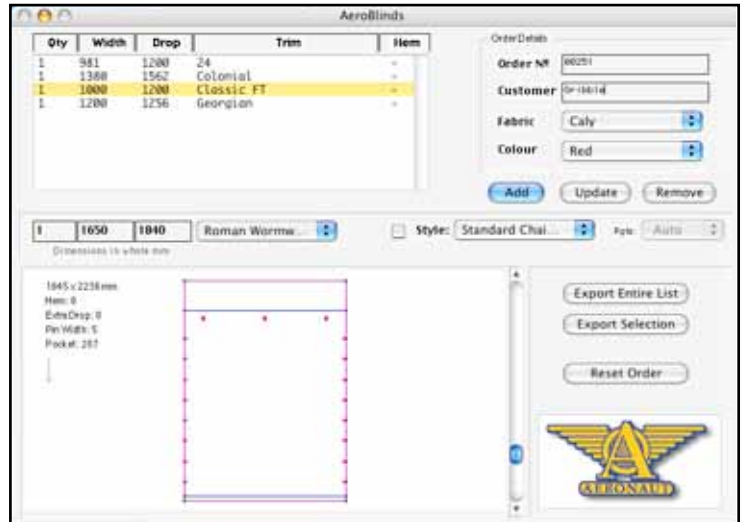
Roller, holland & roman patterns can be generated as an editable list containing patterns from a single fabric style. Alternatively, with Automated Data Entry, batches of orders from your office software can be automatically processed into ready to cut queues.

Exported patterns are stamped with the order number and size so they can be easily tracked. Trims can be edited and new trims can be added by the factory using a text editor or CAD software. Pin width deductions, extra drop, cut off trims, centre marking and extra panels are all supported by this latest version of the program.

**Aeroawnings 4** is a companion stand-alone program which allows the rapid design of awning skins. Scallop depths and spacing are matched to the pattern repeat of the selected fabric. Users can enter and save their own standard fabrics, scallop styles and pattern repeats for later use.

The width of scallops along join seams can be altered to allow already wide sewn blinds to be finish cut on the plotter with all the scallops at the right spot on the pattern. A marker is positioned at the base of a scallop to allow the pattern to be matched in the plotting software where patterns snap to striped grid lines in the fabric queue.

Both programs have been in use for many years with blind makers and have a vast range of options which can be customised by the user, or by Aeronaut to suit a manufacturer's scallop styles, fabrics, manufacturing and design preferences.



ELKBMS-07-10